

## US-103ICAT-LED

### DESCRIPTIONS

3" LED dedicated IC housing, US-103ICAT-LED is designed for new construction installations and suitable for use in ceiling where the housing can be direct contact with insulation. Air tight construction reduces energy costs by reducing the amount of air leakages through the ceiling.

- Plaster Frame**
  - Galvanized steel construction. The housing can be removed from plaster frame to provide access to the junction box.
- Junction Box**
  - Listed for through branch circuit wiring.
  - Contains one 1-1/8", six 7/8" knockouts and four Romex pryouts with strain relief.
- Bar Hanger**
  - Pre-installed Real nail easily installs in regular lumber, engineered lumber.
  - Bar Hangers are adjustable from 13-5/8" to 25" and can be repositioned 90 degree on plaster frame.
- Listings**
  - cULus Listed for Damp Location
  - cULus Listed for Feed Through
  - Certified under ASTM-E283 for Air tight construction
  - Meets state of California title 24 requirement

## US-103RICAT-LED

### DESCRIPTIONS

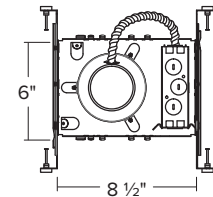
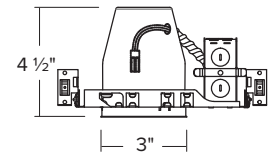
3" LED dedicated IC housing, US-103RICAT-LED is designed for remodel applications and suitable for use in ceiling where the housing can be direct contact with insulation. Remodel housing install into existing drywall or wood ceiling with no above access. Air tight construction reduces energy costs by reducing the amount of air leakages through the ceiling.

- Junction Box**
  - Listed for through branch circuit wiring.
  - Contains one 1-1/8", six 7/8" knockouts and four Romex pryouts with strain relief.
- Remodel Clips**
  - Four remodel clips secure housing and accommodates 1/2" and 5/8" ceiling materials.
- Listings**
  - cULus Listed for Damp Location
  - cULus Listed for Feed Through
  - Certified under ASTM-E283 for Air tight construction
  - Meets state of California title 24 requirement



**3" IC LED  
Dedicated Can  
New construction**

### DIMENSIONS



**3" IC LED  
Dedicated Can  
Remodel**

### DIMENSIONS

