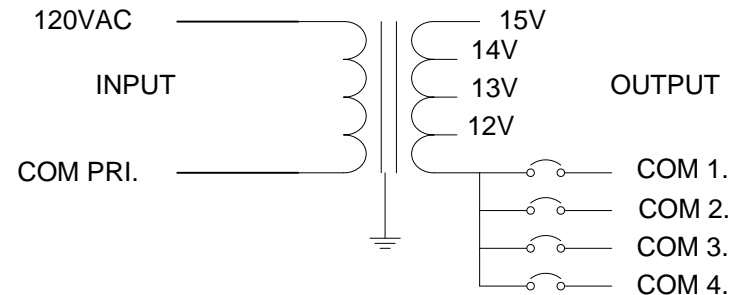
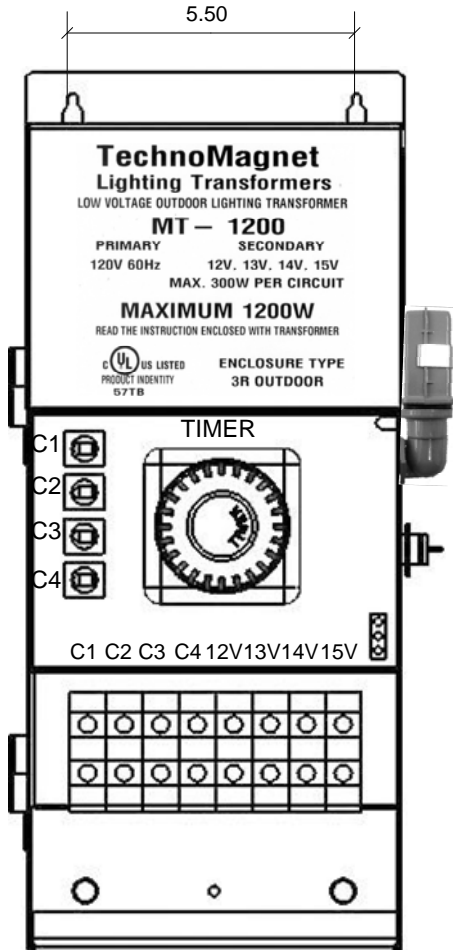


Table 1.

Terminal block label	Output Volts
12V	11.7
13V	12.7
14V	14
15V	15.1

NOTES:

1. Output voltage in table 1 with 120VAC applied and fully loaded.
2. Maximum no load input current : 1.1A
3. Case Temperature not exceed 70°C in a 40°C ambient, fully loaded.
4. The actual transformer 1500VA is encapsulated in the case.
5. The transformer is dimmable with all dimmers designed for magnetic transformers.
6. Input is 16 AWG line cord, output is terminal block 12~2 AWG (4~35 sq. mm.)
7. The output terminal block rated for 125A and 800V.
8. The photocell connector rated for 13A 250V.
9. The transformer use class B (130°C) insulation material.
10. The transformer has 4 manual reset 25A magnetic circuit breakers on the secondary side
11. Wiring compartment has one knockouts 0.95", two knockouts 1.13", one knockout 0.87" for power cord and one knockout 1.75" .
12. The case is black powder coated or stainless steel outdoor 3R rated, could be used in indoor application, as well.
13. The Transformer is UL 1012 listed.
14. The label containing Technomagnet catalog number and electrical rating.
15. The transformer ready to use with timer and photocell.



TechnoMagnet LTD. Interactive Lighting Servers					
DRW. CHK. APV.	NAME	DATE	SING.	PAGE ____	SCALE no scale
				OF ____	TOLERANCE ±
	DESCRIPTION: Multi-tap 1200VA 15V system Outdoor Transformer.				
PART No. MT- 1200 REV. C					